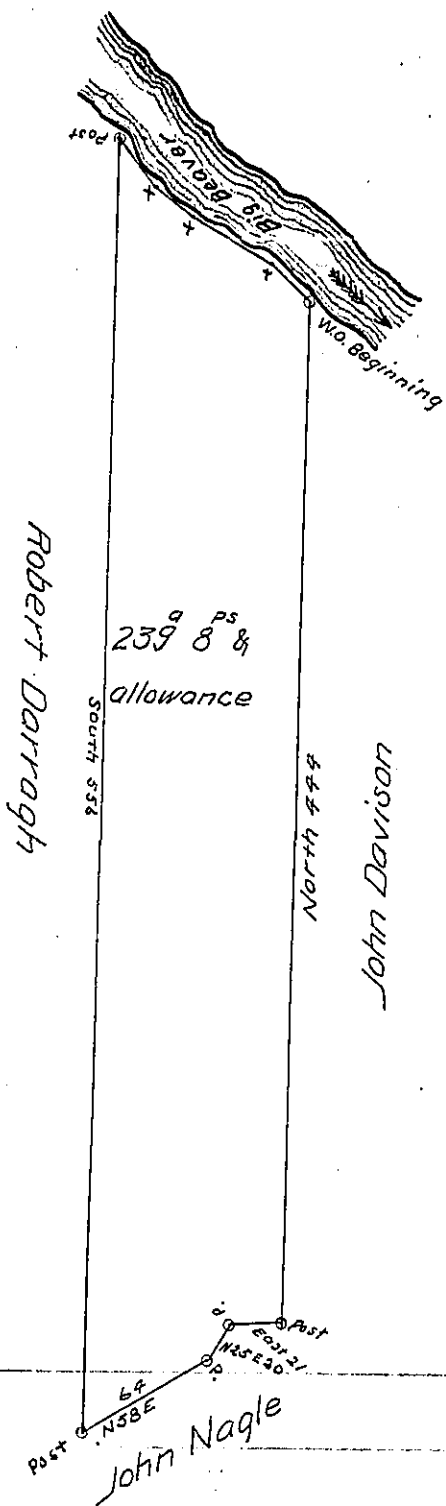


Big Beaver, 105  
Lawrence

✓



N 56 W 18  
N 61 W 42  
N 58 W 20  
N 44 W 26  
up creek

The above is a Draft of a tract of Land Surveyed April 26<sup>th</sup> 1817 in pursuance of a Warrant granted to Robert Davison dated the 4<sup>th</sup> day of December A.D. 1816 Situate in Big Beaver Township Beaver County Containing 239 Acres Eight perches and allowance &.

I Hugh McCullough D.S. do Certify that at the time of Survey there was an actual resident Settlement on the ground.

To Rich<sup>d</sup> T. Leech Esq<sup>r</sup>  
Surveyor General

Hugh McCullough D.S.

IN TESTIMONY that the above is a copy of the original remaining on file in the Department of Internal Affairs of Pennsylvania, made conformably to an Act of Assembly approved the 16th day of February, 1833, I have hereunto set my Hand and caused the Seal of said Department to be affixed at Harrisburg, this thirteenth day of July 1904

*Loac B. Perry*  
Secretary of Internal Affairs.